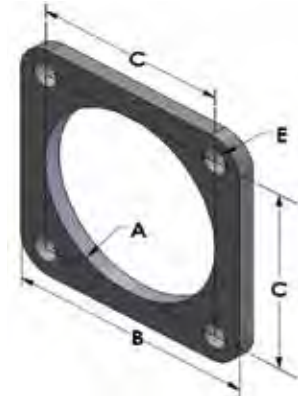


ENGINE EXHAUST FLANGES 1/2" THICK

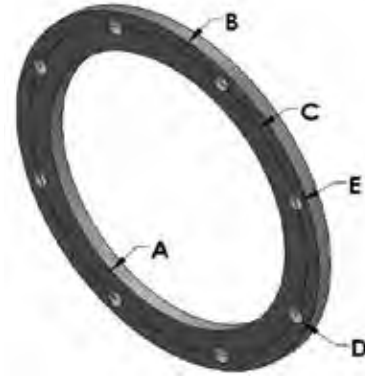
CAT STYLE FLANGES SQUARE

SIZE	*A*	*B*	*C*	*D*	*E*	A-36 C/S PART NUMBER	T-304 S/S PART NUMBER	T-316 S/S PART NUMBER
	I.D.	O.D.	B/C	#BH	DIA			
3"	3.57"	5.50"	4.13"	4	.56"	17-1-3030-36	17-1-3030-304	17-1-3030-316
4"	4.06"	5.50"	4.13"	4	.56"	17-1-4040-36	17-1-4040-304	17-1-4040-316
5"	5.06"	6.50"	5.00"	4	0.66"	17-1-5050-36	17-1-5050-304	17-1-5050-316
6"	6.06"	7.75"	6.00"	4	.81"	17-1-6060-36	17-1-6060-304	17-1-6060-316



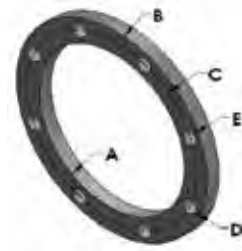
CAT STYLE FLANGES ROUND

SIZE	*A*	*B*	*C*	*D*	*E*	A-36 C/S PART NUMBER	T-304 S/S PART NUMBER	T-316 S/S PART NUMBER
	I.D.	O.D.	B/C	#BH	DIA			
8"	8.13"	11.00"	9.88"	8	.56"	17-1-80-36	17-1-80-304	17-1-80-316
10"	10.13"	13.50"	12.44"	12	.50"	17-1-100-36	17-1-100-304	17-1-100-316
12"	12.06"	16.00"	14.80"	12	.56"	17-1-120-36	17-1-120-304	17-1-120-316
14"	14.06"	18.00"	17.00"	12	.56"	17-1-140-36	17-1-140-304	17-1-140-316
16"	16.13"	23.50"	21.25"	16	.80"	17-1-160-36	17-1-160-304	17-1-160-316
18"	18.13"	22.50"	20.88"	16	.63"	17-1-180-36	17-1-180-304	17-1-180-316



CUMMINS STYLE FLANGES

SIZE	*A*	*B*	*C*	*D*	*E*	A-36 C/S PART NUMBER	T-304 S/S PART NUMBER	T-316 S/S PART NUMBER
	I.D.	O.D.	B/C	#BH	DIA			
5"	5.13"	8.00"	7.19"	8	.56"	17-3-50-36	17-3-50-304	17-3-50-316
6"	6.13"	8.00"	7.19"	8	.56"	17-3-60-36	17-3-60-304	17-3-60-316



DETROIT / MTU STYLE FLANGES

SIZE	*A*	*B*	*C*	*D*	*E*	A-36 C/S PART NUMBER	T-304 S/S PART NUMBER	T-316 S/S PART NUMBER
	I.D.	O.D.	B/C	#BH	DIA			
8"	8.13"	11.00"	9.88"	8	.56"	17-2-80-36	17-2-80-304	17-2-80-316
10"	10.06"	13.00"	11.88"	8	.63"	17-2-100-36	17-2-100-304	17-2-100-316

